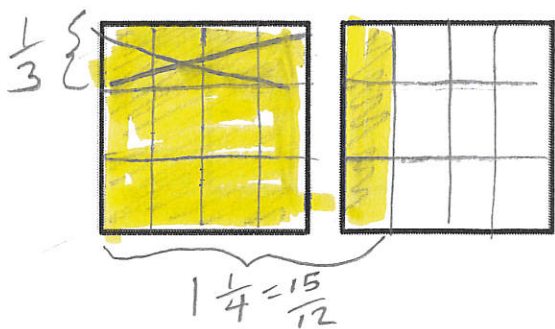


Name KEY

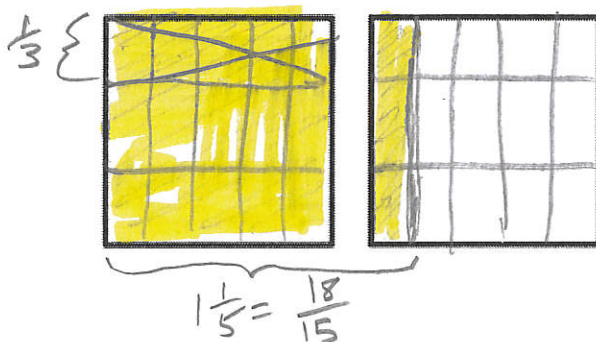
Date _____

1. For the following problems, draw a picture using the rectangular fraction model and write the answer. Simplify your answer, if possible.

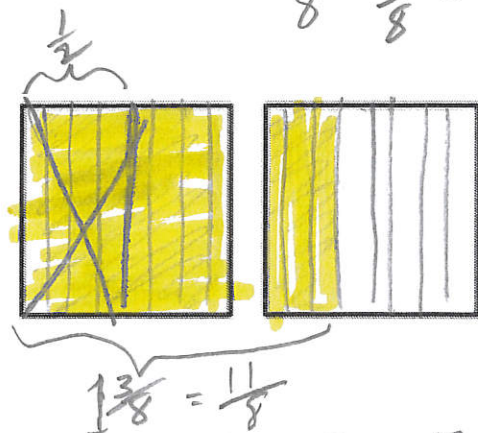
a. $1\frac{1}{4} - \frac{1}{3} = \frac{15}{12} - \frac{4}{12} = \frac{11}{12}$



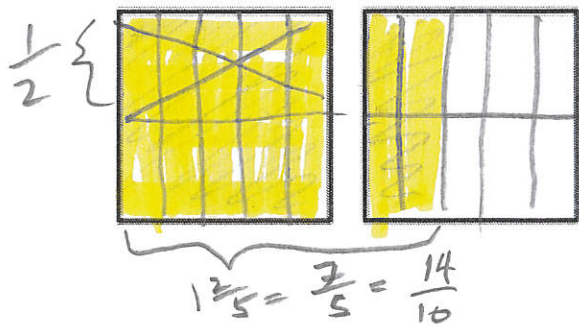
b. $1\frac{1}{5} - \frac{1}{3} = \frac{18}{15} - \frac{5}{15} = \frac{13}{15}$



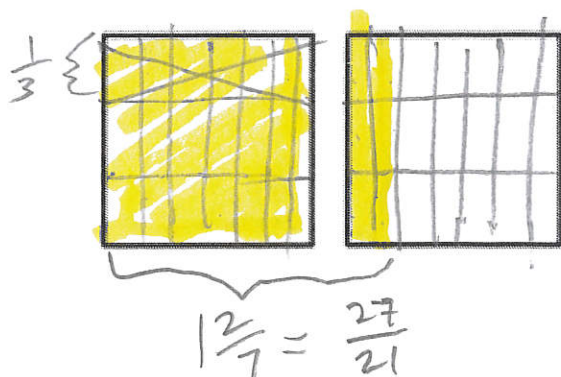
c. $1\frac{3}{8} - \frac{1}{2} = \frac{11}{8} - \frac{4}{8} = \frac{7}{8}$



d. $1\frac{2}{5} - \frac{1}{2} = \frac{14}{10} - \frac{5}{10} = \frac{9}{10}$



e. $1\frac{2}{7} - \frac{1}{3} = \frac{27}{21} - \frac{7}{21} = \frac{20}{21}$



f. $1\frac{2}{3} - \frac{3}{5} = \frac{25}{15} - \frac{9}{15} = \frac{16}{15}$

