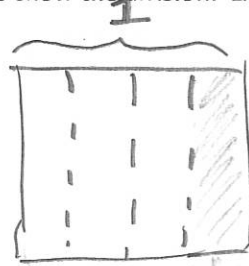


Name KEY

Date \_\_\_\_\_

1. Draw a picture to show the division. Express your answer as a fraction.

a.  $1 \div 4$

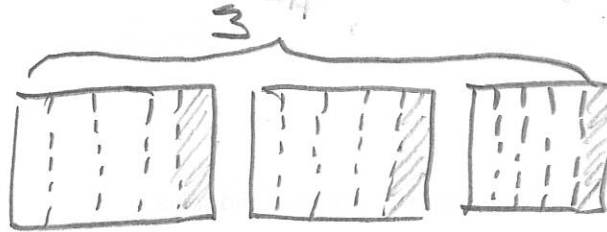


$$1 \div 4 = \frac{1}{4}$$

↓

$$4 \text{ fourths} \div 4 = 1 \text{ fourth}$$

b.  $3 \div 5$

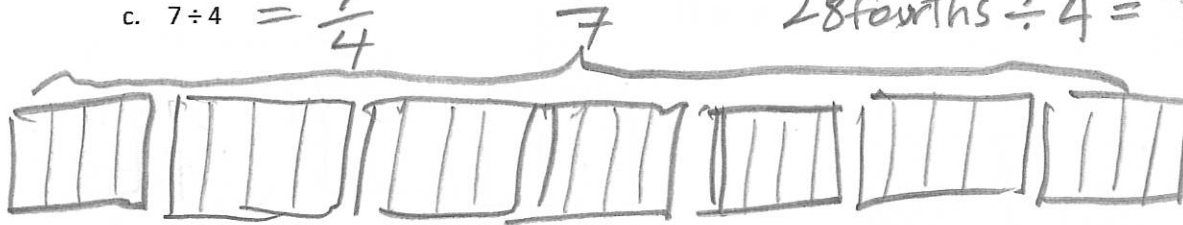


$$3 \div 5 = \frac{3}{5}$$

↓

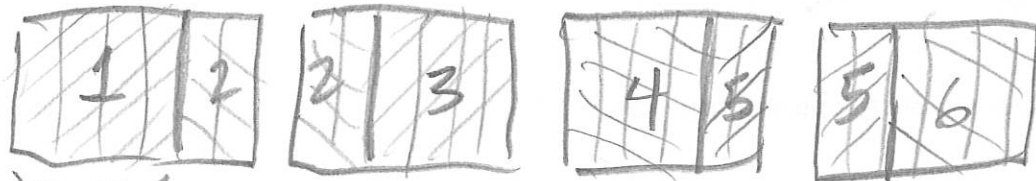
$$15 \text{ fifths} \div 5 = 3 \text{ fifths}$$

c.  $7 \div 4 = \frac{7}{4}$



$$28 \text{ fourths} \div 4 = 7 \text{ fourths}$$

2. Using a picture, show how six people could share four sandwiches. Then, write an equation and solve.



$\frac{4}{6}$

$$4 \div 6 = \frac{4}{6} = \frac{2}{3}$$

3. Fill in the blanks to make true number sentences.

a.  $2 \div 7 = \frac{2}{7}$

b.  $39 \div 5 = \frac{39}{5}$

c.  $13 \div 3 = \frac{13}{3}$

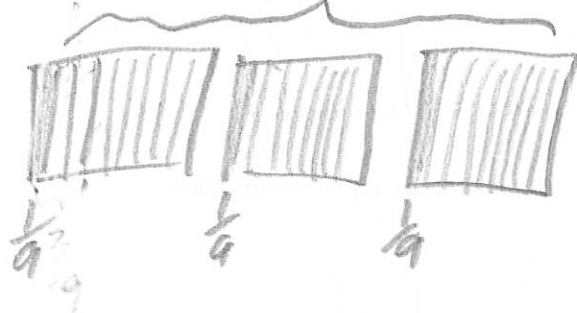
d.  $\frac{9}{5} = 9 \div 5$

e.  $\frac{19}{28} = 19 \div 28$

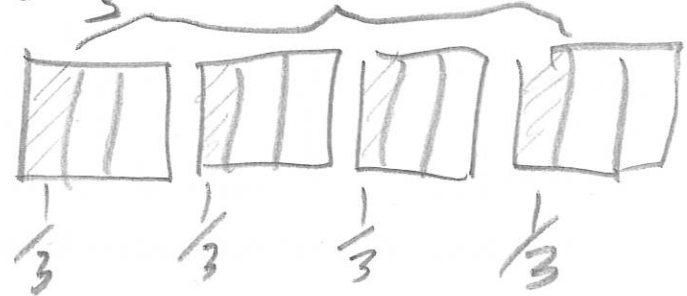
f.  $1\frac{3}{5} = 8 \div 5$

1. Draw a picture that shows the division expression. Then, write an equation and solve.

a.  $3 \div 9 = \frac{3}{9} = \frac{1}{3}$



b.  $4 \div 3 = \frac{4}{3} = 1\frac{1}{3}$



2. Fill in the blanks to make true number sentences.

a.  $21 \div 8 = \frac{21}{8}$

b.  $\frac{7}{4} = 7 \div 4$

c.  $4 \div 9 = \frac{4}{9}$

d.  $1\frac{2}{7} = 9 \div 7$